

# Pan/Tilt Home Security Wi-Fi Camera

**2K**  
Resolution

Tapo C210

## Motion Detection and Tracking

Person  
Detection

Baby Crying  
Detection

Night Vision  
up to 30 ft



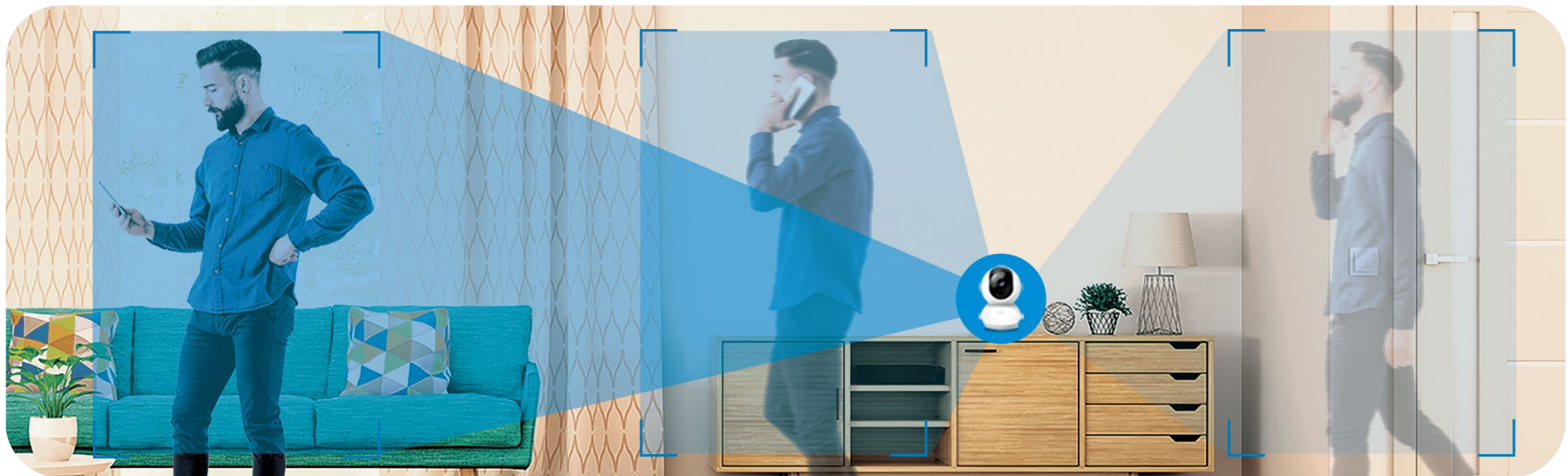
works with 

works with  Google Home

## // Highlight

### Motion Detection and Tracking

Whenever the Pan/Tilt Home Security Wi-Fi Camera detects motion, it will automatically follow the subject, keeping it within the camera's field of view.



## // Features



### Person Detection

Notify you when a person is detected.



### 2K Definition<sup>^</sup>

Provide more crisp details.



### Customizable Block Zones

Set customizable block zones to keep private areas from being monitored.



### Local microSD Storage<sup>†</sup>

Store up to 512 GB of video on a microSD card.



### Two-Way Audio

Communicate in real time through a built-in microphone and speaker.



### Baby Crying Detection

Notify you when your baby cries.



### Night Vision up to 30 ft

Provide a visual distance of up to 30 ft in total darkness.



### Field of View

A 360° horizontal range to get a detailed look at your room and capture every moment.



### Cloud Storage Supported<sup>‡</sup>

Store videos by using cloud storage services.

<sup>^</sup>Compatible with Alexa and Google Assistant supported displays. User experience is dependent on the connected device's specifications.

<sup>†</sup>microSD card needs to be purchased separately. Actual storage capacity depends on the size of the microSD card used.

<sup>‡</sup>Subscribe for cloud storage at <https://www.tapo.com/tapocare/>

For more information, please visit <https://www.tapo.com/>

All brands and product names are trademarks or registered trademarks of their respective holders. Specifications are subject to change without notice.

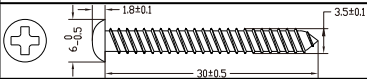
©2024 TP-Link

## // Specifications

<b>Camera</b>	Image Sensor	1/2.8" Progressive Scan CMOS Not Starlight Sensor
	Lens	Focal Length: 4 mm Aperture: F2.0 Field of View: 98° (Diagonal), 83°(Horizontal), 45°(Vertical)
	Night Vision	850 nm IR LED (30 ft / 10 m)
	Day/Night Switch	IR-Cut Filter with Auto-Switching
	Lighting	/
	Interface & Button	1× RESET Button 1× microSD Card Slot (Up to 512 GB)
	Hub Compatibility	/
<b>Video &amp; Audio</b>	Maximum Resolution	2304 x 1296 px
	Frame Rate	15 fps
	Digital Zoom	None
	Video Compression	H.264
	Live View	Yes
<b>Video &amp; Audio</b>	Image Enhancement	3DNR WDR

<b>Video &amp; Audio</b>	Audio Input & Output	Built-in Microphone and Speaker
	Audio Communication	Two-Way Audio with Noise Cancellation
	Siren Volume	88 dB (Level measured at 4-inch/10-cm distance)
<b>Storage</b>	Local Storage	microSD Card Slot on Camera (Up to 512 GB)
	Cloud Storage	Tapo Care Cloud Storage Services (Subscription required)
<b>Detection &amp; Notification</b>	Sensor	/
	AI Detection	Motion Detection Person Detection Baby Crying Detection
	Activity Zones	Yes *Only works with Motion Detection.
	Output Notification	System Notification System Notification with Snapshot (Tapo Care Services)
<b>Network</b>	Network Connectivity	Connect via Wi-Fi
	Wireless Connectivity	IEEE 802.11b/g/n, 2.4 GHz Wi-Fi
	Transmission Rate	11b: 11 Mbps 11g: 54 Mbps 11n: 72.2 Mbps
	Protocol	TCP/IP, DHCP, ICMP, DNS, NTP, HTTPS, TCP, UDP
	Max. Distance Between Hub and Camera/Doorbell	/

<b>Network</b>	Ethernet Port	/
	RTSP	Yes
	ONVIF	Yes (Profile S)
<b>Security</b>	Security	On-Device Machine Learning 128-bit AES Encryption with SSL/TLS WPA/WPA2-PSK
<b>Power</b>	Power Source	9V DC Power Adapter
	Input Voltage	100-240 V, 50/60 Hz
	Output Voltage	9 V, 0.6 A (DC Power)
	DC Power Connector Size	Inside Ø: 2.1 mm Outside Ø: 5.5 mm
	Power Cord Length	3 m
	Typical Power Consumption	1.78 W
	Maximum Power Consumption	3.27 W
<b>General</b>	Certifications	CE, FCC, NCC, BSMI, NTRA, JRF, VCCI, RCM, IC
	Smart Integration	Google Assistant, Amazon Alexa
	Weather Resistance	/
	System Requirements	Tapo App: iOS 9.0 or higher, Android 4.4 or higher

<b>Network</b>	Mounting Options	Tabletop Ceiling-Mounted
	Operating Temperature	0 °C ~ 40 °C (32 °F ~ 104 °F)
	Storage Temperature	-20 °C ~70 °C (-4 °F ~ 158 °F)
	Operating Humidity	10%~90% RH, Non-condensing
	Storage Humidity	5%~90% RH, Non-condensing
	Charging Temperature	\
	Mounting Screw Size	
	Dimensions	3.36 × 3.42 × 4.63 in (85.4 × 86.8 × 117.7 mm)
	Weight	6.7 oz / 190 g
	Package Contents	Tapo C210 Camera Power Adapter Quick Start Guide Mounting Anchors Mounting Screws Mounting Template Camera Base